



INFORMATION TECHNOLOGY
SOLUTIONS

Company

Profile

TABLE OF CONTENTS

01

**About
Us**

02

**Our
Portfolio**

03

**Our
Solutions**

04

**Our
Software**

05

**Our
Services**

06

**Use
Cases**



01 About Us

OUR BOARD MESSAGE

Rather than merely looking back at our past performance, we prefer to also look forward to the enormous opportunities that are emerging from the growing shift to digital business. Through our investments in new solutions and services that expand our capabilities, growth and development of our teams and with continuous reinvestment in our customers' success, we are working to ensure that ITS is well positioned to help clients decode the vast opportunity - and deliver on the potential of this new digital business era.

- We're driven by a passion to help our clients build stronger and more agile cybersecurity practices.
- We provide best support in the market to help our customers secure and control their business.
- We designed our solutions to be flexible and easily grow to adapt to our customer needs.
- We aspire to be the premier partner of choice for our customers by securing their success through our technology and technical resources, services and culture.

Our Core Values: Integrity / Customer Service / Accountability / Teamwork / Innovation.

Looking forward to be working with you

Nour El Dean Mahmoud
Managing Director

OUR COMPANY

Information Technology Solutions - ITS founded as Joint Stock Company in 2010 in Cairo, Egypt specializing in cybersecurity and information technology solutions. The company has a strong portfolio spanning across Cybersecurity solutions, Enterprise Risk Management solutions and Enterprise Fraud Management solutions. Our solutions span from turnkey solutions to outsourcing, support, consultations and managed services.

We focus on bringing our technical team value and expertise using our own intellectual property (ITS branded products), together with vendor agnostic approach. We focus on consulting our customers before offering any solution. We focus on extending their technical teams with ours. This enabled us to be subcontracted by our competition in many transactions.

After successful growth of CAGR 58% over last 12 years. The company has moved into geo-expansion in middle east to serve our customers in the region in better way.

We aim to become one of the regional cybersecurity leaders with our strong offering and Intellectual property.





OUR MISSION STATEMENT

Our mission is to secure

our customers' digital transformation journey with highest quality in the market.

OUR VALUES

Trust, Integrity and Teamwork

are the values upon which we built our growth and success, and which we live and work by



Experience & Know-How



Distinguished References



Intellectual Property



Goals Oriented Company



Not Products but Solutions



Strong Tech Ecosystem



210 | Total
Projects



190 | Security
Projects



15 | Outsourcing
Projects

ITS IN **NUMBERS**



9 | Countries



7 | Industries



50 | Technology
Partners



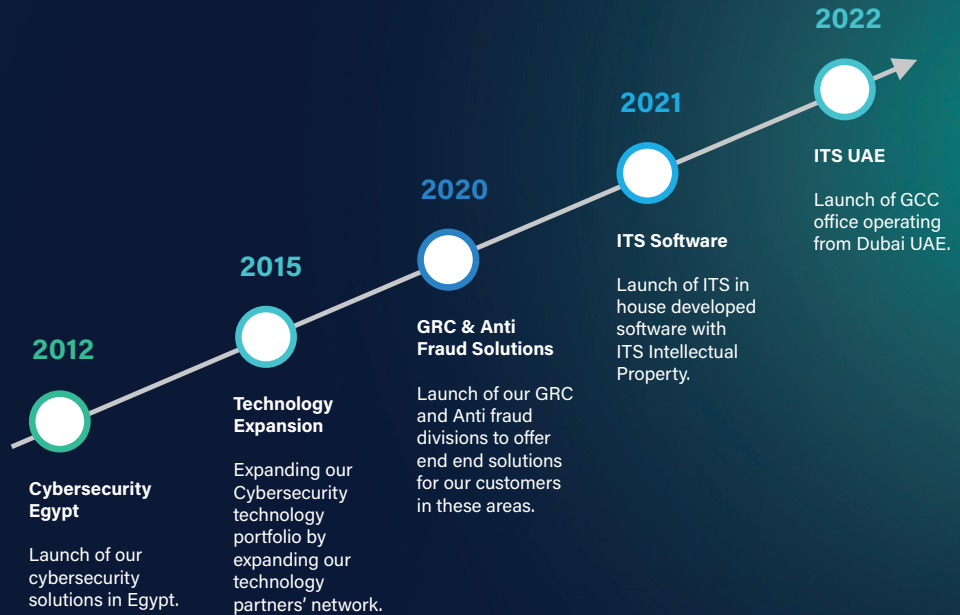
GEO COVERAGE




- Current Locations
- Planned Locations



OUR KEY MILESTONES



OUR CUSTOMERS



120

Customers

 Sample References



OUR INTERNATIONAL PRESENCE

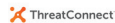


- UAE – KSA – Lebanon – Jordan – Algeria – Morocco – Tunisia – Kuwait – Oman

OUR INTERNATIONAL CUSTOMERS



OUR TECHNOLOGY PARTNERS



OUR DIFFERENTIATOR

Them

Competition focuses on combining technology vendor products with professional services and offering it as turn key solutions to the customer. Making competition between them price sensitive and difficult to win. Also, It makes it easy for the customer to replace or find other alternatives.





Us

We focus on bringing our technical team value and expertise using our own intellectual property (ITS branded products), together with vendor agnostic approach. We focus on consulting our customers before offering any solution We focus on extending their technical teams with ours. This enabled us to be subcontracted by our competition in many transactions.



02 OUR PORTFOLIO

DIVERSIFIED PORTFOLIO



Turn key Solutions

End-End Technology solutions bundled with professional Services.



Consultative Services

Technology consultation services.



ITS Software

In-house developed cybersecurity products.



Outsourcing

Extending out customers' technical team with ours.

OUR CORE FOCUS

Both Implementation & Professional Services including consultation.

**Enterprise Risk
Management**



**Cybersecurity
Solutions**



**Enterprise Fraud
Management**





03 **OUR**
SOLUTIONS

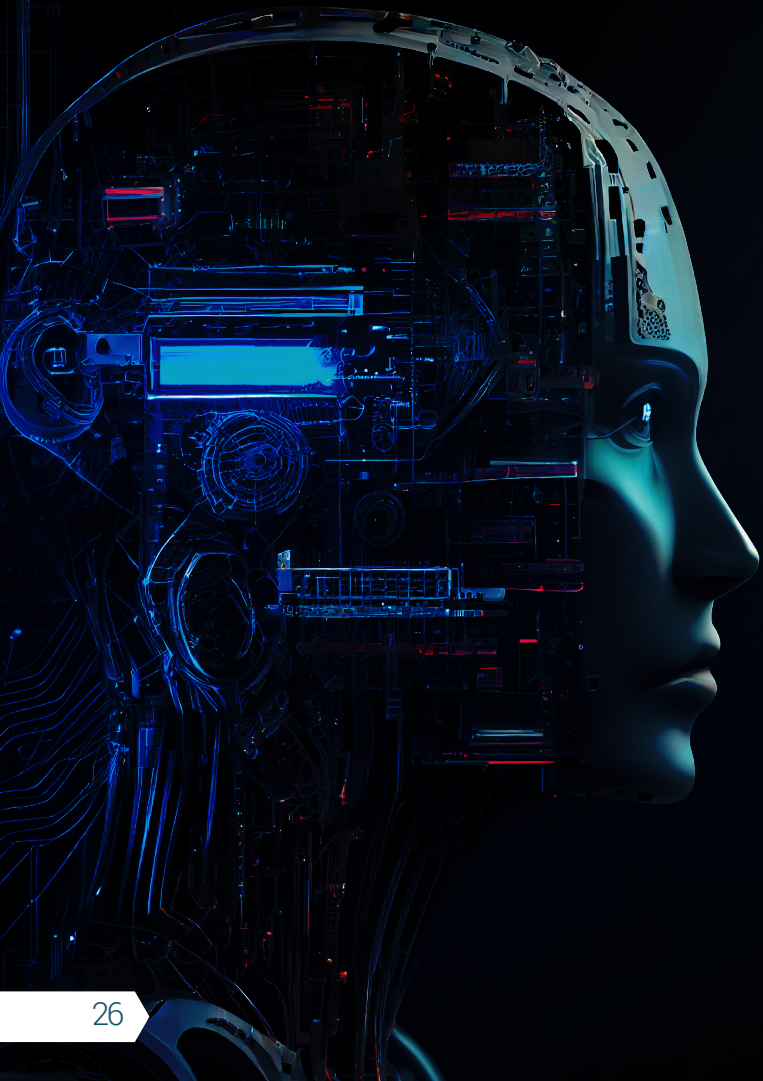
OUR CYBERSECURITY --- SOLUTIONS



OUR CYBERSECURITY FRAMEWORK

Over the course of 12 years we have built our framework based on industry standards such as NIST, PCI, ISO 27001, SANS...etc.





AI, BIG DATA & BLOCKCHAIN SECURITY

Securing AI Platforms

Securing AI, a rapidly evolving field, poses unique challenges that demand specialized strategies. As AI technologies become integral to diverse applications, safeguarding them requires a multi-faceted approach. This involves not only ensuring the integrity and privacy of the underlying data but also mitigating bias in training data to prevent discriminatory outcomes. Robust authentication and authorization mechanisms are essential to control access to AI systems, while continuous monitoring and anomaly detection help identify potential attacks or unauthorized behavior. Encryption plays a pivotal role in protecting AI models and data during transit and storage. Collaboration between AI developers and cybersecurity experts is imperative to establish a secure foundation for AI innovations, fostering trust and reliability in AI-driven solutions across industries.

Securing Big Data Platforms

Securing big data is a complex endeavor due to the vastness and diversity of data sources. Protecting this data necessitates a multi-layered approach. Data encryption during transmission and storage is essential to prevent unauthorized access. Rigorous access controls and identity management systems are crucial for managing who can access, modify, or manipulate the data. Additionally, robust authentication mechanisms and real-time monitoring aid in identifying unusual activities and potential breaches. Data anonymization and minimizing data retention contribute to privacy preservation. Collaborative efforts between data architects, analysts, and cybersecurity professionals are pivotal to establish comprehensive security measures that safeguard big data, enabling organizations to derive insights while maintaining data integrity and compliance.

Securing Blockchain

Securing blockchain entails unique considerations due to its decentralized and immutable nature. Focus on cryptographic measures, key management, smart contract auditing, and consensus protocols is crucial. Transparent traceability and collaboration among experts are key to implementing resilient security measures in blockchain systems, preserving trust and revolutionizing industries while countering emerging threats.



INFRASTRUCTURE SECURITY

Network Security Solutions

Securing your network requires the right protection in the right place including Firewalls, IPS, WAF, NAC, Proxy, Authentication... Etc.

End Point Detection & Response (EDR)

Pushing all detection and response decisions down to the endpoint, eliminating response latency that can mean the difference between a minor security event and a widespread, uncontrolled security incident.

Mobile Device Management (MDM)

A complete Unified Endpoint Management solution should allow computer management with the same technology you use to manage mobile devices.

Penetration Testing

Our specialists find the weakest points in your company and will show you how to fix them step by step, as well as how to improve your security, including Network, Application, red & blue team penetration testing.



CLOUD --- SECURITY

Cloud Access Security Broker (CASB)

A cloud access security broker, is a security policy enforcement point positioned between enterprise users and cloud service providers. CASBs can combine multiple different security policies, from authentication and credential mapping to encryption, malware detection, and more, offering flexible enterprise solutions that help ensure cloud app security across authorized and unauthorized applications, and managed and unmanaged devices.

Cloud Application Security

In the realm of Cloud Application Security, a Web Application Firewall (WAF) safeguards hybrid and cloud-native environments, while Advanced Bot Protection counters automated attacks. Client-Side Protection prevents JavaScript-based exploits, Runtime Protection thwarts supply chain and zero-day attacks, and DDoS Protection ensures uninterrupted app availability. Lastly, API Security enables secure API management amidst DevOps-driven changes.

Cloud Data Security

Cloud Data Security is a dynamic SaaS solution for managing and safeguarding data within AWS and Azure managed databases. It emphasizes effective posture management, data protection, and compliance. Its platform specificity ensures tailored effectiveness, while the SaaS model offers scalability and user-friendliness.

Container Technology Security

Container Security encompasses a comprehensive range of measures to ensure the safety and integrity of containerized applications. It begins with Vulnerability Management, where potential weaknesses are identified and addressed proactively. Compliance protocols are diligently upheld to meet industry standards. During runtime, robust defenses are employed to counter threats that may arise. Cloud-native access visibility guarantees insight into access points within cloud environments. Access control mechanisms are rigorously enforced to manage permissions effectively. Integration with CI/CD pipelines ensures security is seamlessly woven into the development process, assuring the reliability of applications from inception to deployment.



SECURITY INTELLIGENCE

SEIM Solutions

Detect, investigate, and resolve security incidents and threats using a single, scalable SIEM solution. It provides you with actionable insights and analytics driven intelligence for real time security monitoring, advanced threat detection, incident management, and behavioural analytics based anomaly detection.

Threat Intelligence Solutions

Provide evidence based knowledge, context, and actionable recommendations, regarding cyber threats so you can prioritize effort and increase capacity to detect and respond faster to attacks.

NDR / XDR Solutions

Eliminate blind spots and monitor your network in real time with ML driven threat detection and response and a built in MITRE ATT&CK engine.



INCIDENT --- RESPONSE

SOAR Solutions

Security Orchestration, Automation, and Response (SOAR) Platform provides a central location to integrate not only your security tools, but all of your security processes.

Incident Response Platform

Drive quicker response times with native case management capabilities and relevant intelligence at your fingertips. It is designed to make life easier for SOCs, CSIRTs, CERTs and any information security practitioner dealing with security incidents that need to be investigated and acted upon swiftly.

SOC Outsourcing & Consultation

Outsourced Security Operations Center is designed to provide a comprehensive cybersecurity function, delivering a level of expertise, experience, and technologies that organizations find near impossible to replicate in house.



DATA SECURITY

DAM Solutions

Monitors and protects your most sensitive information both on premises and in the cloud supporting all database technologie, flat files and Data warehouses.

Data Encryption Solutions

Offers a comprehensive data encryption solution to provide the customer with the tools to the capabilities to encrypt all the data format as Virtual Machine, Database, File system, Application and Tokenization.

Test Data Management Solutions

Automate provisioning of masked, sub setted, and synthetically generated data to meet development and testing needs.



IDENTITY & ACCESS MANAGEMENT

Privileged Access Management

Monitors and protects your most sensitive information both on premises and in the cloud by creating, storing, and managing these credentials in a secure vault, privileged account management controls authorized access of a user, process, or computer to protected resources across an IT environment.

Identity Governance & Management

Identity security (also known as identity governance and identity management) protects against the cyber threats associated with providing technology access to a diverse workforce.

Access Management

Gain a complete view of all access across your organization, including those hidden or unknown that may pose inherent risk.

The background of the slide features a high-angle view of numerous silhouettes of people walking across a large, brightly lit blue floor. The lighting is dramatic, with the floor appearing very bright in the center and darker towards the edges, creating a sense of depth and movement. The silhouettes are scattered across the frame, some walking towards the camera and others away from it.

GOVERNANCE, RISK & COMPLIANCE --- SOLUTIONS

Integrated Solution for GRC Needs

Governance, Risk & Compliance Platform (GRC)

Holistic integrated risk management on a single, configurable platform that manages multiple dimensions of risk and drives accountability across your internal functions and extended third party ecosystem.

Risk Quantification Solution

Identify the risks that matter most to your organization by quantifying cyber risk in financial terms, our Cyber Risk Quantification solutions are built using the Open FAIR Standard.

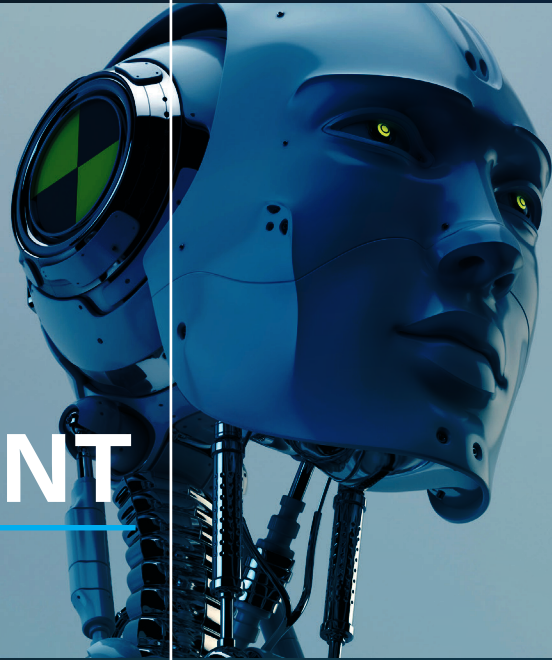
IT & Security Risk Management Solution

Our IT & Security Risk Management solution can be the backbone of your strategy to manage technology risk whether it is supporting major digital business initiatives, enabling your security teams or facilitating IT compliance.

Enterprise GRC Solution



FRAUD MANAGEMENT SOLUTIONS



Anti-Money Laundering/CFT Compliance

Comply with ever changing regulations. Confidently and accurately monitor growing volumes of transactions and take a risk based approach to compliance that increases transparency and reduces your compliance risk.

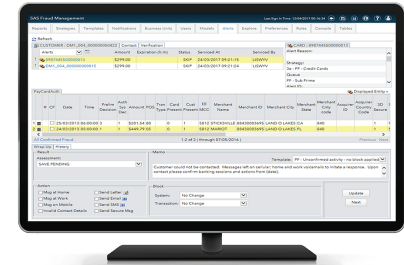
Identity & Digital Fraud

Digital fraud is increasing, and the impact on your business can be tremendous. It empowers you to shield your customers and your organization from ever changing threats. Get real time results with our digital fraud analytics, AI driven data orchestration and industry leading on demand decision engine.

Enterprise Investigation Management

Gather and manage intelligence, conduct complex investigations and improve investigative processes and workflows with this solution. It helps you identify and explore complex networks (e.g., criminal and terrorist connections) across multiple data sources and over variable time periods.

Enterprise Fraud Management



Fraud, Anti Money Laundering & Security Intelligence

Take a unified approach to fraud, compliance and security.

04 OUR SOFTWARE

ITS Cybersecurity Products

Subscription based software for on-prem and cloud deployments

SOC Designer

All best practices are linked in one database for SOC consultants can design their SOC Use cases.

SOC Analytics

Big data analytics for SOC developed specially for C Level and lead forensic investigators to have defined KPIs monitoring.

SOC in a Box

End-to-End solution for companies who want to automate their SOC focusing on Compliance and Risk rather than technology implementations.



ITS Software

Helping our customers in:

- Which controls/ compliances to focus on.
- Bridging the gap between Compliance driven and Risk driven cybersecurity practice.
- Overcome lack of Experienced Resources in the Market.

A 3D rendering of several dark blue puzzle pieces arranged in a line on a light blue surface. The pieces are slightly offset, creating a sense of depth. The background is a gradient of blue, with a white rectangular frame around the central puzzle pieces.

05 OUR SERVICES

A close-up photograph of a person's finger being scanned on a blue, textured surface, likely a biometric security device. The finger is positioned horizontally, and the scan area is highlighted by a white oval. The background is a blurred blue and green gradient.

SECURITY CONSULTATION --- SERVICES

Wide Range of SOC Consultation Service

Best class consultation methodology and practice

SOC Maturity, Visibility & Gap Assessment

- SOC Maturity Assessment In Depth Report including SOC Gap Analysis Finding

SOC Strategy & Roadmap Development

- SOC Strategy Document
- SOC 3 Year Roadmap

SOC Organization Design

- SOC organization design document
- SOC organization operational model
- SOC Foundational Training

SIEM and SOAR Architecture Design

- SOC Architecture Design Document

SOC Process Design

Design SOC processes for Threat monitoring, Threat triage and analysis, Incident response, Cyber threat intelligence, Use case development, Cyber threat hunting, Log source onboarding, Log source management

SOC Governance Model Design

- SOC Governance Design Document

SOC Playbooks Development

- Malware, Ransomware, Account Compromised, Phishing, DDoS, Data Exfiltration, Web Attacks, Policy Violation

SOC Essential Metrics Development

- SOC Use Cases Framework Design Document
- Development of use cases on SIEM solution (75 rule)

SOC Essential Metrics Development

- KPIs and Reporting framework and Reporting specifications including data elements

Unmatched Cybersecurity Consultation Services

Purple Teaming Consultation Services

Performing RED and BLUE team exercise by conducting a wide variety of known adversary techniques for many purposes, including but not limited to validating assumptions about security controls, testing detection coverage and learning what malicious activity looks like, giving defenders a highly actionable way to immediately start enhancing their defences against a broad spectrum of attacks.

Compromise Assessment and Threat Hunting

Compromise Assessment Service is designed to find out if an organization's IT environment has been breached and determining the scale and severity of its impact. By finding Indicators of Compromise (IoCs) during the detection phase, we thoroughly analyse the nature of the attack and suggest remediation steps to contain the damage and prevent malicious activity in the future.

Top Table Consultation Services

Conducting the TTX exercise to test organization Incident Response plans and procedures before an incident occurs, Validate the team's ability to handle Security Incident, Validate the team's ability to adapt to evolving situation, Validate the accuracy of Security Incident processes and Identify areas of the process to be reviewed.



**SECURITY
MANAGED
SERVICES**

ITS Managed Services

Whatever you need we are here to support

Outsourcing & Insourcing Resources

Get instant access to a large pool of high quality Cybersecurity Engineers. Accelerate your next big project with a hand picked team of Cybersecurity.

Support Services

Our Archer Specialist Exam Support Services offers your technical teams support around the clock, 24 hours per day, 7 days a week 365 days a year, with flexible engagement models.

Managed Security Service Provider (MSSP)

For customers who want to outsource their Security Operations Center, we offer our MSSPs high availability security operation center (from their own facilities) to provide 24/7.

Managed Services





06 USE CASES

Advanced Security Analytics

Challenges

Being a well-known telecommunication company with a mobile subscriber base of almost 40 mn people and with over 3,000 employees, the Customer processed a large data traffic over 3G/4G and logs, therefore, is a top target for fraudulent activities (both internal fraud and cyber-crime).

Solution

Our team developed a set of correlation and offense rules with a special management platform. It provided an automatic and real-time analysis of the collected security events and a timely detection of suspicious activities. Thanks to the adjusted event correlation, the installed solution separates true threats from false alarms (false positives).

Results

The Customer can now increase the information security and investigate incidents in the shortest time possible.

Deal Size

Total revenue over six years \$5 mn with gross profit of \$3 mn.

Major Telecom Operator-Case Study





Security Consultation & Outsourcing

Challenges

In order to be truly successful as a financial institution in a digital world and keep the trust of their customers, the bank must ensure an adequate level of reliability and security. While developing new services, therefore, simultaneously optimizing internal processes and upgrading its cyber defense systems.

Solution

By introducing ITS SOC consultation and outsourcing services, customer has established a system of continuous (24/7) detection and response to cyber threats, using a combination of modern detection technology, including AMP (Advanced Malware Protection), EDR (Endpoint Detection and Response), and managed SIEM technologies.

Results

ITS SOC consultation and outsourcing services has allowed the customer to upgrade its process capability to respond to cyber incidents.

Deal Size

Total revenue over 3 years \$400K with gross profit of \$250K.

Governance, Risk & Compliance

Challenges

To manage cyber risk effectively, customer needed the ability to quickly identify incidents and prioritize responses. The bank lacked integration to leverage all available data needed to identify cyber incidents. There was also no way to easily understand which affected systems were most critical, making it difficult to determine which threats to respond to first.

Solution

The bank integrated their threat defense with our security risk management capabilities to gain visibility into threats and get insights into the impact of an affected system's criticality. Our solution enabled the bank to catalog IT assets and identify which are most critical. That information can then be used to prioritize incident responses.

Results

Currently they can quickly identify which systems are the most critical to the bank's operations and initiate a priority response when those come under attack.

Deal Size

Total revenue over 4 years \$1.4 mn with gross profit of \$400K.

Major Commercial Bank-Case Study





Address

Egypt: 26 Adn St., Mohandessin, Giza, Egypt

UAE: Office 606, Arenco Tower, Media City, Dubai, UAE

Tel.

Egypt: +20 23 749 3773 / **UAE:** +971 425 41838

Email

info@mail.egypt-its.com

Website

www.egypt-its.com

LinkedIn

[information-technology-solutions-its](https://www.linkedin.com/company/information-technology-solutions-its)



Our Website



Our LinkedIn